



# Wespath

BENEFITS | INVESTMENTS



Wespath Benefits and Investments (Wespath) implements the sustainable investment strategies, including the approach to climate change, for investment funds made available through it and its subsidiaries, including Wespath Institutional Investments.

## Sustainable Investment Strategies

Working to help support the creation of a sustainable global economy

Our framework of **Invest—Engage—Avoid** drives our activities



### Invest

We invest in companies that demonstrate meaningful social and environmental impact to seek higher returns



### Engage

We actively engage companies and policymakers by urging them to adopt sustainable practices and policies

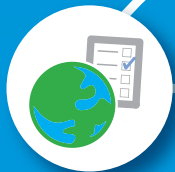


### Avoid

We avoid certain investments due to ethical exclusions or because they pose excessive sustainability-related financial risks



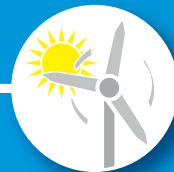
Sustainable investment approach covers nearly **\$26 billion** in assets



Making our **voice heard** by voting proxies **at over 3,700** global companies



Over **\$2.1 billion** dedicated to positive social purpose investments including over **53,000** affordable housing units in the U.S.



**\$2.9 billion** invested in companies worldwide providing **low-carbon solutions**



Over **\$1.5 billion** allocated to **women and/or minority-owned** asset managers

Data as of December 31, 2024; \$2.1 billion PSP figure reflects cumulative investments since 1990.



[wespath.org](https://wespath.org)

a general agency of The United Methodist Church